



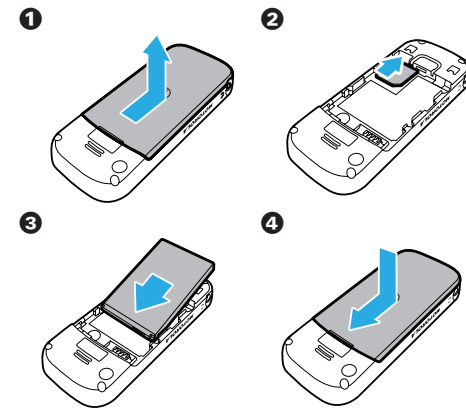
motorola W213

Getting Started Guide

## get started

You can download a full user manual by going online to: [www.motorola.com.hk](http://www.motorola.com.hk)

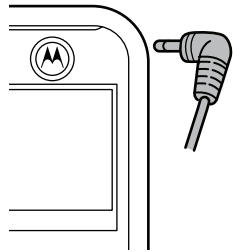
### install SIM card & battery



## get started

### charge battery

New batteries are not fully charged. To charge your phone's battery, plug the battery charger into your phone and into an electrical outlet. Your phone may take several seconds to start charging the battery.



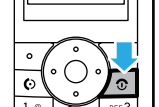
When charging is finished, your display shows **Charge Complete**.

For tips on battery life and charging, see the "Battery Tips" section of this guide.

## get started

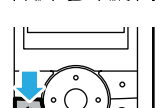
### turn phone on & off

Press and hold for a few seconds, or until the display turns on or off.



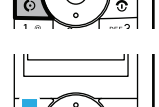
### make a call

Enter a phone number and press .



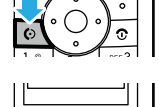
### answer a call

When your phone rings and/or vibrates, press .



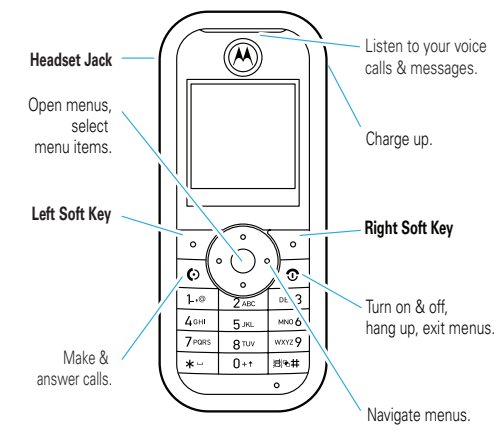
### end a call

Press .



## basics

### your phone

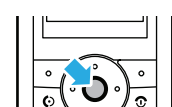


**Note:** All the illustrations, simulated screen and related images used in this manual are for reference only. There may be slight difference between the handset and keys and content of display used in this manual and those of your handset. Please refer to your handset for actuality.

## basics

### menus

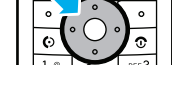
1 Press the **center key** to open the **Main Menu**.



2 Press the **navigation key** up, down, right, or left to highlight a menu option.



3 Press the **center key** or **SELECT** to select the highlighted option.

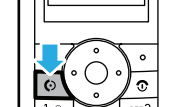


## basics

### emergency calls

To call the emergency number:

Press keypad keys to enter the emergency number, then press to call it.



Your service provider programs one or more emergency phone numbers (such as 999) that you can call under any circumstances, even when your phone is locked or the SIM card is not inserted.

**Note:** Emergency numbers vary by country. Your phone's preprogrammed emergency number(s) may not work in all locations. Sometimes an emergency call cannot be placed due to network, environmental, or interference issues.

## basics

### voicemail

Find it: > Messages > Voicemail

### recent calls

Find it: > Recent Calls

**Shortcut:** Press from the home screen to see a list of dialed calls.

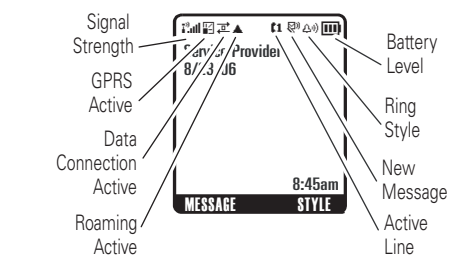
### lock/unlock your keypad

Press > (within 2 seconds) to lock or unlock your keypad (to prevent accidental key presses).

## basics

### status indicators

Status indicators show at the top of the home screen:



## basics

### menu map

<b>Contacts</b>	<b>Games</b>
<b>Recent Calls</b>	<b>WebAccess</b>
<ul style="list-style-type: none"> <li>Received Calls</li> <li>Dialed Calls</li> <li>NotePad</li> <li>Call Times</li> <li>Call Cost*</li> <li>Data Times</li> <li>Data Volumes</li> </ul>	<ul style="list-style-type: none"> <li>Start Browser</li> <li>Web Shortcut</li> <li>Go to URL</li> <li>Web Session</li> <li>Stored Pages</li> <li>History</li> <li>General Setting</li> </ul>
<b>Messages</b>	<b>Multimedia</b>
<ul style="list-style-type: none"> <li>Create</li> <li>Inbox</li> <li>Draft</li> <li>Outbox</li> <li>Quick Notes</li> <li>VoiceMail</li> <li>Browser Msgs</li> <li>Info Services</li> <li>MMS Templates</li> </ul>	<ul style="list-style-type: none"> <li>Pictures</li> <li>Sounds</li> <li>FM Radio</li> </ul>
<b>Extras</b>	<b>Personalize</b>
<ul style="list-style-type: none"> <li>Calculator</li> <li>MyMenu</li> <li>Alarm Clock</li> <li>Stop Watch</li> <li>Dialing Services</li> <li>STK Service*</li> <li>SIM Applications*</li> <li>Calendar</li> </ul>	<ul style="list-style-type: none"> <li>Home Screen</li> <li>Main Menu</li> <li>Color Setting</li> <li>Greeting</li> <li>Wallpaper</li> <li>Screen Saver</li> <li>Quick Dial*</li> </ul>
	<b>Settings</b>
	<p>*Optional features. This is the standard main menu layout. Your phone's menu may be a little different.</p>

## customize

### change ring

To change ring volume:

Find it: > Settings > Ring Style > style Detail

- 1 Scroll to **Ring Volume** and press **Change**.
- 2 Press right or left to raise or lower volume.

To change ring style:

Find it: > Settings > Ring Style > Style

Scroll to the style you want and press **Select**.

- |                   |                |
|-------------------|----------------|
| Loud Ring         | Soft Ring      |
| Vibrate only      | Vibrate & Ring |
| Vibrate then Ring | Silent         |

## FM radio

### listen to radio

Find it: > Multimedia > FM Radio

**Note:** A headset must be plugged in to activate the FM radio function. If you try to turn it on without inserting the earpiece, your phone will display **Please Insert The Earpiece**.

When the FM Radio is displayed:

Press left or right to adjust the frequency.

Press up or down to adjust the volume.

Press **MUTE** to mute the radio.

Press > **FM Radio OFF** to turn the radio off.

**Tip:** Press **HIDE** to listen to the radio while you use other features.

## web browser

### start the browser

Find it: > Web Access > Start Browser

### go to URL

Every website has a web address known as a URL. If you know the URL for the site you want to visit, you can enter the URL and go directly to it:

Find it: > Web Access > Go to URL

### end web browser

Find it: > OK

## contacts

### store contacts entry

Enter a phone number from the home screen.

- 1 Press **STORE**.
- 2 Press **CHANGE** to open the **Name** entry area.
- 3 Enter a name for the new contacts entry.
- 4 Press **DONE** to store the entry.

### call contacts entry

Find it: > Contacts

Scroll to the entry you want to call and press .

## text messages

### send a text message

Find it: Press > Messages > Create > Create Message > SMS/EMS or MMS

1 Type the message and press **OK**.

To insert a picture, sound, or other object, press > **Insert**. Only the available options for the message type are listed.

**TIP** Press to switch text entry mode to iTAP™, Tap, Numeric, or Symbol.

2 Enter the number you want to send to by selecting a **Contacts** entry, **[One Time Entry]** or **[New Entry]**. Press **DONE**.

3 Press **SEND** when ready to send the message.

## text messages

### read a text message

When you receive a new message, your phone plays an alert and displays the or (new message) indicator. Press **READ** to read the message.

To see **received** messages:

Find it: > Messages > Inbox

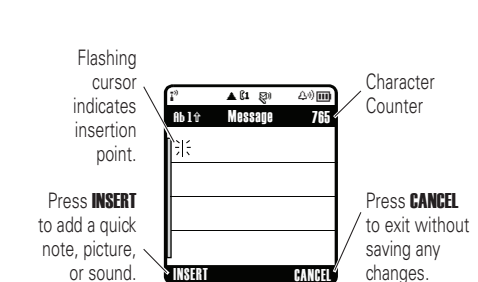
To see messages you have **sent**:

Find it: > Messages > Outbox

## text messages

### enter text

You can enter text for text messages:



## text messages

Press to switch text entry modes:

**iTAP™**: Press each letter's key once, then choose from the words your phone suggests.

**Tap**: Press each letter's key repeatedly, until the letter appears.

**Numeric**: Enter numbers only.

**Symbol**: Enter symbols only.

## Battery Tips

Battery life depends on the network, signal strength, temperature, features, and accessories you use.

- Always use Motorola Original batteries and chargers. The warranty does not cover damage caused by non-Motorola batteries and/or chargers.
- New batteries or batteries stored for a long time may take more time to charge.
- When charging your battery, keep it near room temperature.
- When storing your battery, keep it uncharged in a cool, dark, dry place.
- Never expose batteries to temperatures below -10°C (14°F) or above 45°C (113°F). Always take your phone with you when you leave your vehicle.
- It is normal for batteries to gradually wear down and require longer charging times. If you notice a change in your battery life, it is probably time to purchase a new battery. Contact your local recycling center for proper battery disposal.
- Warning:** Never dispose of batteries in a fire because they may explode.

Before using your phone, read the battery safety information in the "Safety and General Information" section.

Mobile Devices Business  
(852)2506-3888 (Hong Kong)  
[www.motorola.com.hk](http://www.motorola.com.hk) (Hong Kong)  
[www.motorola.com.hk](http://www.motorola.com.hk)

Certain mobile phone features are dependent on the capabilities and settings of your service provider's network. Additionally, certain features may not be activated by your service provider, and/or the provider's network settings may limit the feature's functionality. Always contact your service provider about feature availability and functionality. All features, functionality, and other product specifications, as well as the information contained in this user's guide are based upon the latest available information and are believed to be accurate at the time of printing. Motorola reserves the right to change or modify any information or specifications without notice or obligation.

MOTOROLA and the Stylized M Logo are registered in the US Patent & Trademark Office. All other product or service names are the property of their respective owners. The Bluetooth trademarks are owned by their proprietor and used by Motorola, Inc. under license. Java and all other Java-based marks are trademarks or registered trademarks of Sun Microsystems, Inc. in the U.S. and other countries.  
© Motorola, Inc. 2007.

**Caution:** Changes or modifications made in the radio phone, not expressly approved by Motorola, will void the user's authority to operate the equipment.

continued